

Mhoqbun 1

L	l	O	o
---	---	---	---

htêwang= L l

htêhtoq= O o

Lo gi, yòso má nyi lhê. Lo gi, yosô é zau nghut lhê. Yhang lé myàng jáng, ó le gyùq lhê.



Lo gi, yòso má nyi lhê.

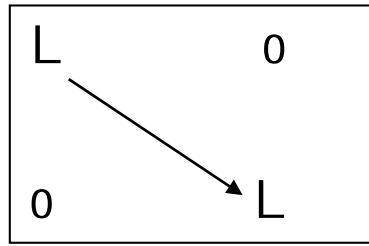
Lo

L

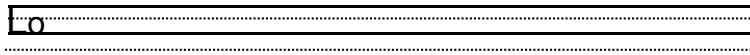
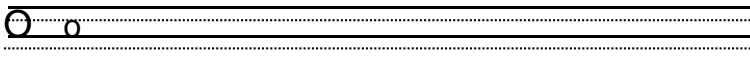
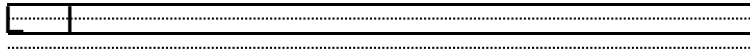
Lo
o

o
Lo

1. Pung é laiká yhângnu lé, myihkyèt eq hkyèt shit àq.



2. A-ô má byî tô é lé kê mhoq àq.



Ihê

Lo

Lo Ihê.

Lo lo Ihê.



Laiká cham ko chung é hkyô

Dang-yán rayán, byù myìng, wà myàng, ming myîng pé lé kê é hkûn, laiká cham ko lé, je hí cham má kê chung râ lhê. Hau htoq agó, Garai eq sêng é myìng pé kê é hkûn le, laiká[cham ko lé je hí cham má kê chung râ lhê.

Dangké=

Lo gi, yòso má nyi lhê.

Garai Gasang,

Myitkyinâ

Myen Ming

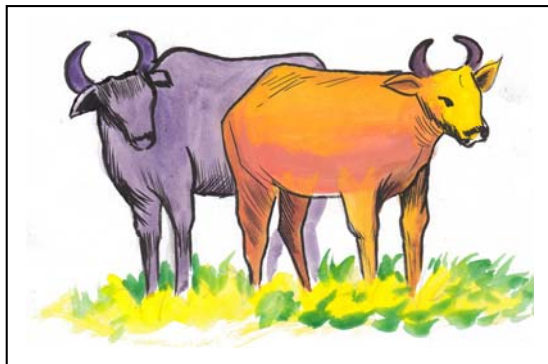
Mhoq̄bun 2



htêwang= N n

dangsət kúmlhá= .

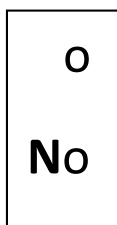
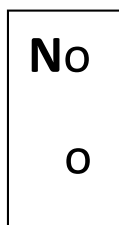
No gi, byù ra-âm é matú a-kyû bo dik é dusàk nghut lhê.
Nolhêng she é dông le, yohtung hpuq byî é dông le, byù lé htuq
báng sù nghut ri.



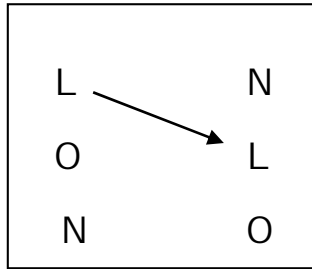
No gi, byù ra-âm é matú a-kyû bo dik é dusàk nghut lhê.

No

N



1. Pung é laiká yhângnu lé, myihkyèt eq hkyèt shit àq.



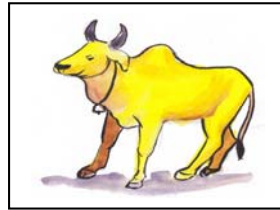
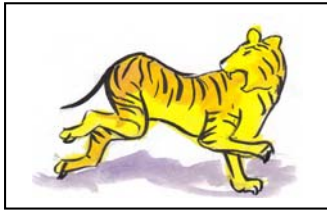
2. A-ô má byî tô é lé kê mhoq àq.

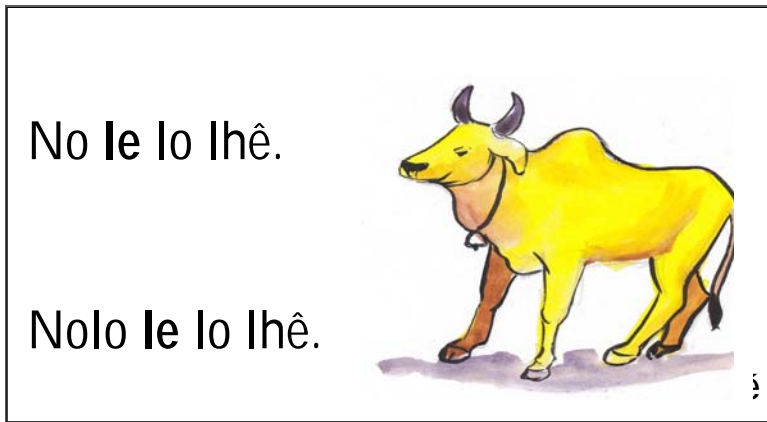
N n

N o

nolo

3. Byî tô é alhô lé wú mù, mying ká aq.





Dangsat kumlhá (.) lé chung é hkyô.

Dangsat kumlhá (.) lé gi, dang rayán ban taí jáng kat lhê. Haú gi, soq byíng shoq wó she yú rã eq myít wú ra bê gã é lichyúm nghut lhê. Hau htoq agó, dang ban taí bê ngu é lichyúm le bo lhê.

Dangké=

(rã. akô. bê. nghut lhê. nghut ri.) ga, dang yán sat é má myô chung lhê. Hau htoq agó (kut àq. byi laq. kut keq.) gã é pé má le chung lhê.

Mhoqbun 3

G g	[
-----	---

Htêwang= G g

htê-myhâng kúmlhá= [

Zaiwâ wuì, zìnggó gó akô. Háu má zo-myi, zorâm wuì le bo akô. Zìnggó gó é hkûn, zìngtaú, chapchéng, utzo pé bò râ lhê.



Zaiwâ wuì zìnggó **gó** akô.

gó

go

g

~ 7 ~

gó
go
o

o
go
gó

1. Alhò lé wú mù, dangcham lé xoq byi aq.



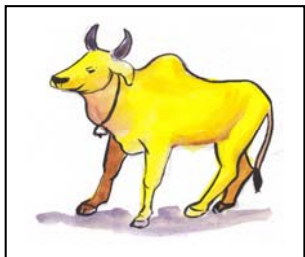
1. no

.....



2. ló

.....



3. gó

.....

2. A-ô má byî tô é lé kê mhoq àq.

o

g

gô

akô

Lo gô akô.
No le gô akô.



Htê-myhâng kúmlhá (l) lé chung é hkyô

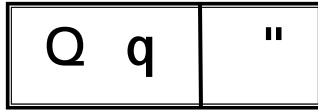
Htê-myhâng kúmlhá (l) lé gi, htê-myhang é dangcham má bo é htêhtoq pé má kat é kúmlhá nghut lhê.

Dangké=

ló

gó

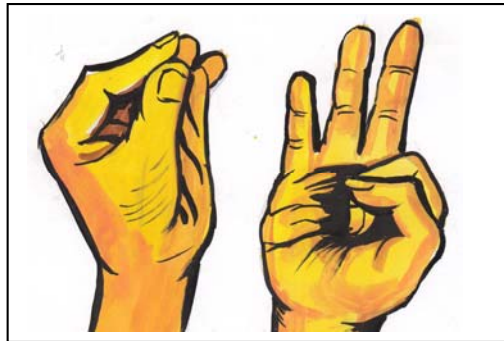
Mhoqbun 4



htê-ngap kúmlhá= Q q

htê-nyhúm kúmlhá= ' '

Lòq lé wú kat jáng, lòqnyhui ra-nyhui eq ra-nyhui a pung lhum kó nghut ri. Nghut kôlhang, Lòq èq laiká wó kê lhê. Lòq èq mú le wó zuî lhê. Lòq nò jáng gi, haî kut râ le wuî lhê.



Lòq èq laiká wó kê lhê.

Lòq

oq

q

Lòq nò jáng gi, haî kut râ le wuî lhê.

nò

ò

o

Lòq
oq
o

nò
ò
o

o	o	o
lo	no	go
lò	nò	gò
lòq	nòq	gòq

1. A-ô má byî tô é lé kê mhoq àq.

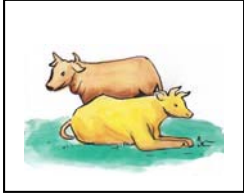
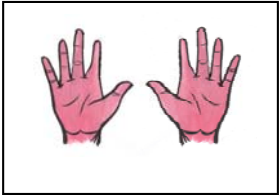

o

q

lòq

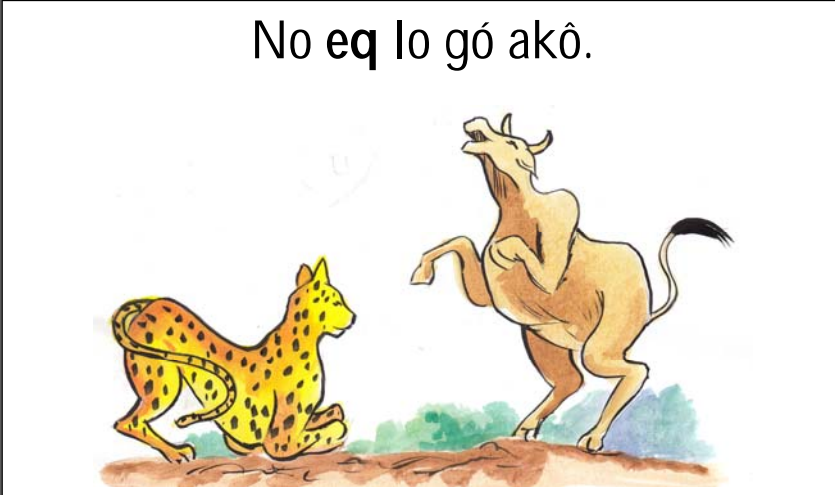
nòq

2. Alhò lé wú mù, byî tô é laiká yhângnu eq alhò myìng kâ wú aq.

l o n q g ' [
		
_____	_____	_____

eq

No eq lo gó akô.



Htê-nyhûm kúmlhá (') lé chung é hkyô

Htê-nyhûm kúmlhá (') lé gi, nyhum é dangcham mâ é
htêhtoq má kat é kúmlhá nghut lhê.

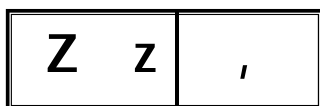
Dangké=

nò

lò

gò

Mhoqbun 5



htêwang= Z z

daüno kúmlhá= ,

Yhûm má hkau sù a wó wâng râ matú, zòq myhî to râ dùt lhê.
Haù mù, yhûm ralhum má gi, zòq ahkyàk dik é nghut lhê.



yhûm ralhum má gi, zòq ahkyàk dik é nghut lhê.

Zòq

zo

z

~ 15 ~

Zòq
zo

o
zo

1. A-ô má byî tô é lé kê mhoq àq.

Z z


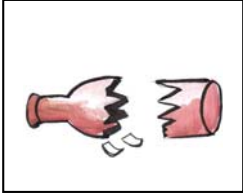
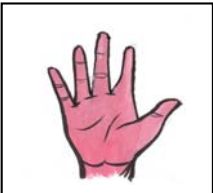
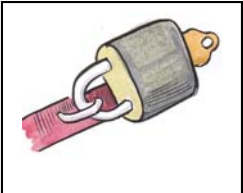
Zòq

no zo

lòq zo


2. Alhò lé wú mù, byî tô é laiká yhângnû èq myìng kâ wú aq.

z o g -q l n

_____		_____	
_____		_____	

Haû mù

Lo eq no gó akô. **Haû mù**, no lòq no lhê



Daùno kúmlhá (,) lé chung é hkyô

Daùno kúmlhá gi, danghkun rahkun hkaû má razùp nô yu é hkûn, chung é kúmlhá nghut lhê.

Dangké=

Yesuq gi, ngá-nhúng é matú, tapzîng htoq má shî hkám byi bê. Hkâsu mù gâ le, haû gi, mingkan zo wuî lé chyitdàp luî nghut lhê.

Mhoqbun 1 mai 5
Taû mhoqbun 1
Ban mhoq lai bê pé

htêwang	L I N n G g Z z
htêhtoq	O o
htê kúmlhá	[']
htê-ngap kúmlhá	-q
daùno	,
Dangsat	.

Lo eq no gó akô.
 Nolo eq nozo le gó lhê.

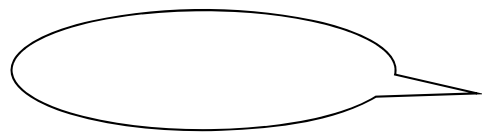
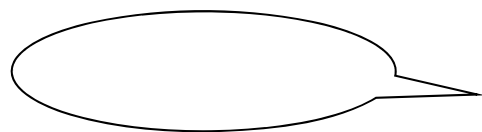
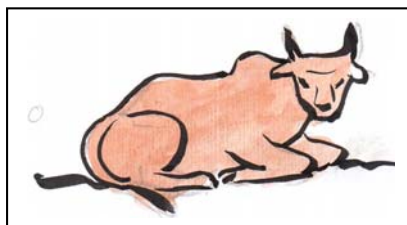
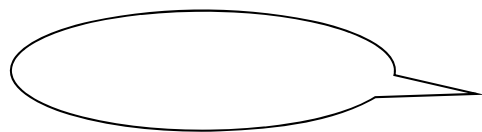
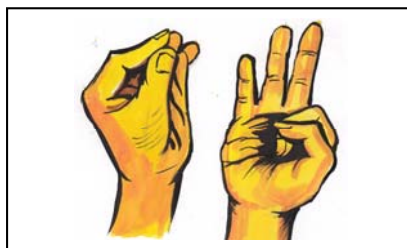
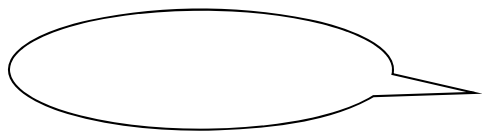


1. Pung é dangcham lé, myihkyèt èq hkyèt shit àq.

Lo	gó
No	zòq
Gó	lo
Zoq	no

↘

2. Byî tô e[alhoʒe[wu[mu', ha` ŋghut e[le]kâ wu[laq.

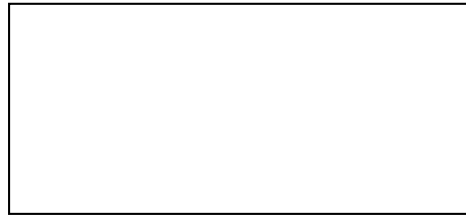


3. Byî tô é dangcham pé lé a-ô yán má pûng shoq sai kê wú aq.

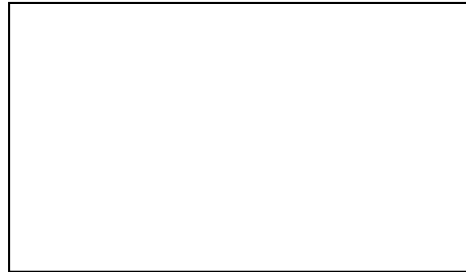
lòq nò gò zòq lo
(oq) (no) (go) (zo) (l)

4. Byî tô é dangcham lé alhô sôî àq.

Lòq →



Zòq →



Mhoq bun 6

E e	>
------------	-------------

Htêhtoq te= E e

htê-myhâng gyó= >

Gam Bung gi, nô gùngdu htoq má lèq râ hen ló ri. Haú jáng, no haú gi, yhâng é yhumsîng hpó lèq râ matú, zim za yàp to byî ri. No haú gi, gyai mé é no nghut ri.



Nô gùngdu htoq má **lèq** râ hen ló ri.

Nô **lèq**

ô le

o e

Lèq
Le
e

e e e
le ne ge
lèq

No>
o>
o

o
no
nô

1. A-ô ma[byî tô é lé kâ mhoq àq.

E e

lèq

no>

2. A-ô má byî tô é lé, dang-yán jo shoq hkyin kat àq.

no _____ (nó, nô) lhê.

no _____ (gó, gòq) lhe>

nozo_____ (lo, lô) lhê.

haú

No **haú** lé zô lhê.



Htê-myhâng gyó kúmlhá (➤) lé chung é hkyô

Htê-myhâng gyó kúmlhá (➤) lé gi, htê myhang é mai gyó é dangcham má kat é nghut lhê.

Dangké=

nô

zô

lê

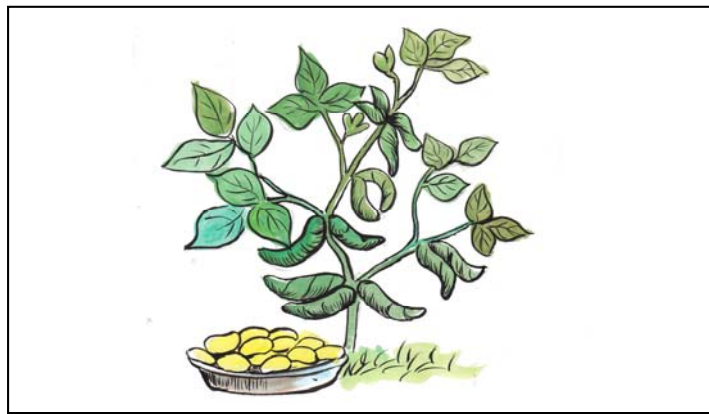
Mhoqbun 7

A a	U u	-
------------	------------	----------

Htêhtoq te= A a
U u

htêkyô kúmlhá = -

Ânu gi, hkyâm má nùq hô tô rí. Nùqgam mai ashi zuí lò mù,
myhíng jáng, bát yù mù, chyôq zô lhê. Nùqpup le pup zo,
nùqyen le yen zo kut lhê.



Ânu gi, hkyâm mà nùq hô tô rí.

Ânu nùq

Â nu

A u

Ânu
 Â
 A

a a a
 ânu a-ô a-ú

nùq
 nu
 u

u u u
 nu lu gu
 nùq lùq gùq

1. Pung é dangcham lé kê lhîng shit àq.

ânu	nùq	no	ânú	lòq	âgu
a-ú	zo	a-ú	ú	zòq	lòq
nùq	gó	zo	no	nùq	ló
a-ô	a-ú	lòq	ú	no	a-ô

2. A-ô má byî tô é lé kê mhoq àq.

Aa

Uu

Anu

Nùq

ri

Gu-nú nùq zô ri.

Haû mù, a nò gâ.



Htêkyô kúmlhá (-) lé chung é hkyô

Htêkyô kúmlhá (-) shî gi, dang racham lé htê nghap hkoq wuî é jowò má, san za wó nghap râ matú, kyô byî é kúmlhá nghut lhê.

Dangké:

a-ú, a-ô, gu-nú

Mhoqbun 8

l	i	?
---	---	---

Htêhtoq te = l i
dangmyi kúmlhá= ?

Îgu Yóng gi, haî kut ri?Îgu Yóng, ngozo kóng.

Îgu Làq, ngún zé wàq.

Îgu Tû, du dut tû.



Îgu Yóng gi, haî kut ri?

Îgu

Î

l

îgu
î

i i i
inu igu gi
înu îgu

1. A-ô má byî tô é lé kê mhoq àq.

î

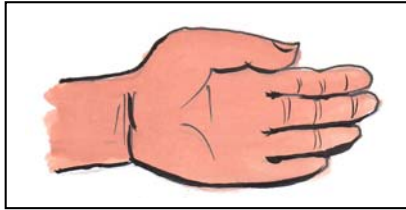
i

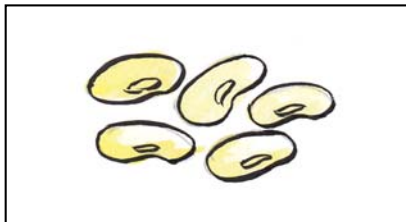
gu

nu

2. Alhò lé wú mù, byî tô é laiká yhângnû eq hte kufnlha[pe>
eq mying kâ wú aq.

n o q i g u l e ' >







Ânu **gi**, lòq no ri.

Gu-nú le lòq no ri.

îgu **gi**, lòq a nò.

gi

Dangmyi kúmlhá (?) lé chung é hkyô

Dangmyi kúmlhá (?) shî lé gi, rayùq yùq lé dangmyi myí é
hkùn, kat é kúmlhá nghut lhê

Dangké=

Náng myîng haî gâ lhê?

Wáng nyi lhê lùq?

Zang zo bê lhú?

Mhoqbun 9

B b	M m
------------	------------

htêwang = B b

M m

Yhûmsing é gùngdu wángzán râ hkyô gi, yhûmsîng yhang
cháng râ dùt lhê. Haû mù, a nò râ matú, myín lé yhup jáng,
buhtû eq mè lé rago za wùt mù, yhup râ lhê.



Buhtû eq mè lé rago za wùt mù,

Bu mè

B me

m

Bu
u

mè
me
e

u	o
bu	bo
buq	boq

e	u
me	mu
mè	muq

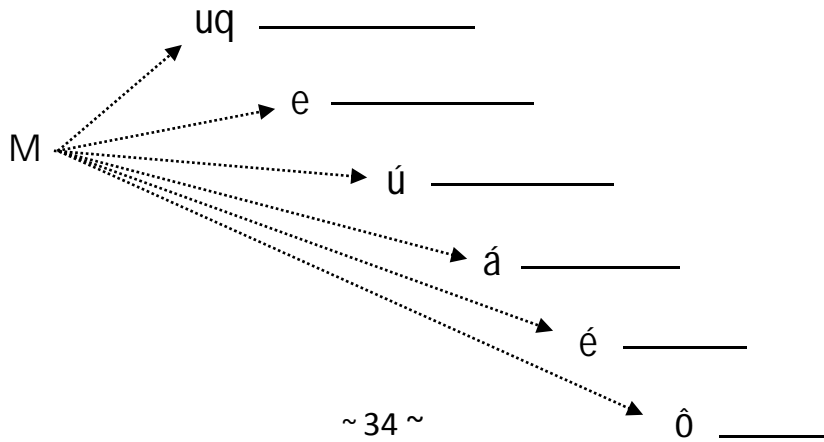
1. A-ô má byî tô é lé kê mhoq àq.

B b

M m

muq

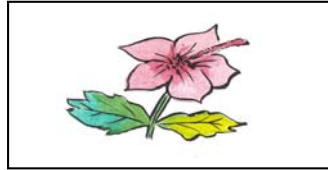
2. A-ô má by` ʒə lé dangcham pong kê wú aq.



3. Alhò lé wú mù, haì nghut é lé kâ wú aq.

Dangké=

bùq



mù

Ânu, nùq lé ô mù,
zo bê. Gu-nú le,
nùq lé o ri [ga>
Îgu le, nùq lé
bo ô mù, zô ri.

Mhoqbun 10

K k	Ht ht
------------	--------------

htêwang= K k

Ht ht

Jòq htoq jòq, kêhtoq dòq, xo joi jòq.



Jòq htoq jòq, kêhtoq dòq, xo joi jòq.

htoq

kehtoq

hto

ke>

ht

ke

k

htoq
hto
o

o
hto
htoq

o e
hto hte
htoq hte>

kehtoq
ke>
ke
e

e o a
ke ko ka
keq koq

1. A-o ma[by` toe]le[kahtoq aq.

K k

Ht ht

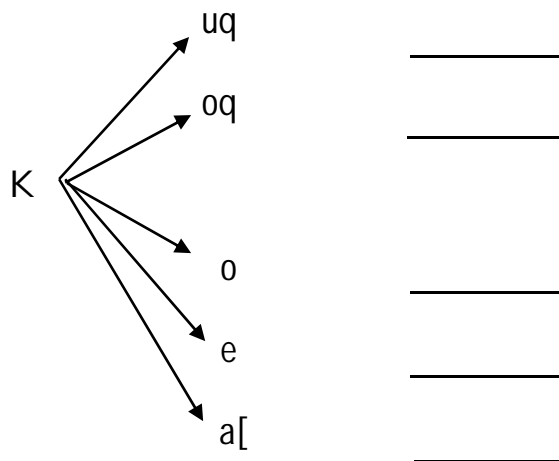
kehtoq

2. Dangcham le[wu[mu', alhoʂo` ʌq.

keʂtoq

me'htu>

3. A-oʂma[by` ʂoʂle[dangcham pong kaʂwu ʌq.



ma[

Ma Bu[gi, muzo[ma[e lo[ri.

Ânu gi, muzo[ma[a e>

Ânu gi, no ri.



Mhoqbun 6 mai 10

Tauᵐhoqbun 2

Ban mhoq lai bê pé

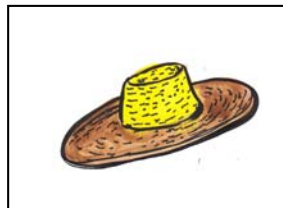
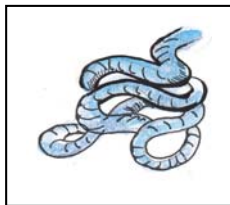
htêwang	B b M m K k Ht ht
htêhtoq	A a U u E e I i
htê kúmlhá	>
dangmyi kúmlhá	?
htê-kyô kúmlhá	-

Ânu lé lo ri. Ânu gi, zo-nú lé mè èq gò mù, lé lo ri. Zo-nú gi, lèq no ri. Gu-nú mè htoq má gó ri.

1. **Pung é dangcham lé, myihkyèt èq hkyèt shit àq.**

ânu	îgu
kêhtoq	gòq
lèq	ânu
gòq	→kêhtoq
îgu	lèq

2. Alhò lé wú mù, haì nghut é lé kâ wú aq.



3. 'a\ gâ é htêtoq lẹ nghap cham 1,2,3 má bo é laiká yhangnu pé èq jô é dông dangcham wó kâ é myhó ká mù, nghap cham 3 lhum má bo é htê lé jô é dông kat wú aq.

Dangké= ânù, a nò, a-nè, a-nú, a-nòq, a bò, a bú

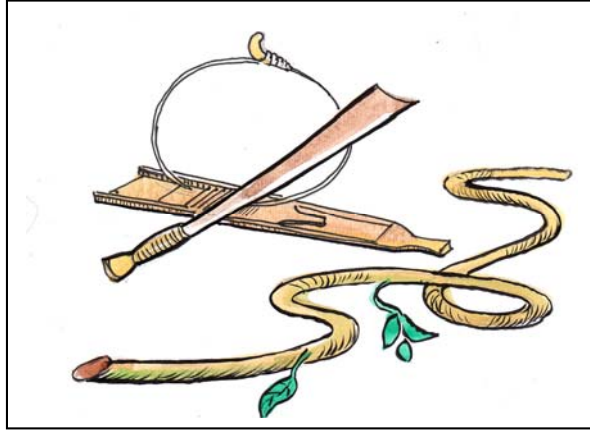
	1	2	3	
a	n			
	b	o	-q	_____
	o	e	>	_____
	g	u	[_____
	ht		'	_____

Mhoqbun 11

T t	ui
------------	-----------

htêwang= T t
htêhtoq tsúm= ui

Shâm haû hai shâm? Nuì hpyit shâm. Nuì haû hai nuì? Hkui tui nuì!



Nuì haû hai nuì? Hkui **tui** nuì.

Nuì **tui**
Nuì **t**
ui

Nuì
Nuì
ui

tui
ui

u	e	i
tu	te	ti
tuq	teq	tiq

Ui	ui	ui
tui	nui	lui

1. A-ô má byî tô é lé kê mhoq àq.

T t

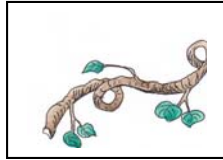
ui

tui

2. Byî tô é htêwang eq htêhtoq lé pông mù, mân é gòk má pong kê kat àq.

	ui	u	o	e'
t	tui			
z		zu		
m				
ht				

3. Alhò lé wú mù, haì nghut é lé kâ wú aq.



.....

.....

.....

tô

No lé lo ri.
Ma Nú gí, no lé tui mù,
lòq èq zúî **tô** ri.



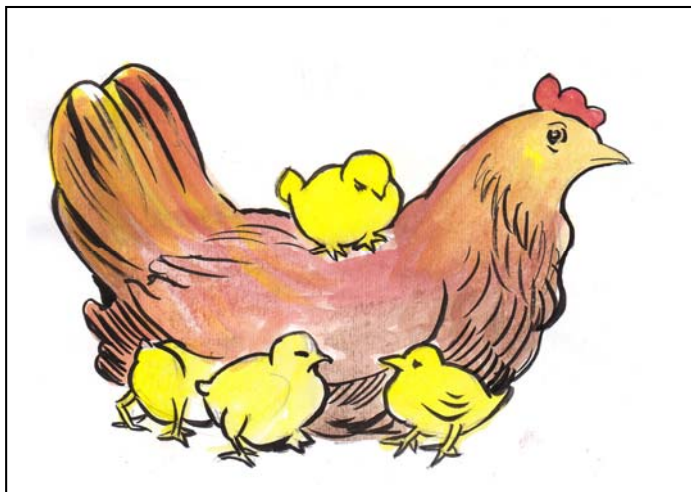
Mhoqbun 12

W w	R r
-----	-----

Htêwang= W w

R r

Wòqzìng gí, wòqzo mùp jáng, rago za dət shuī ri. Wòq zô pé kô
lò rā matú gí, wòqzìng é mú nghut ri.



Wòq zô pé kô lò rā matú gí,

Wòq rā

wo ra

w r

Wòq wo o	u o e wu wo we wòq	râ ra r	o i a ro ri ra roq riq
-----------------------	--------------------------	----------------------	------------------------------

1. A-ô má byî tô é lé kê mhoq àq.

W w

R r

roq

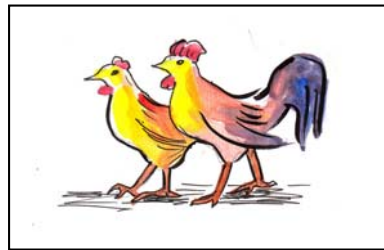
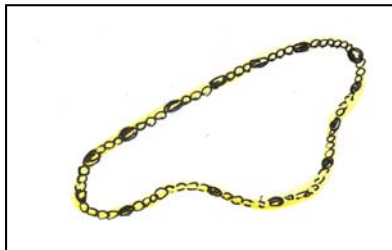
wòq

2. A-ô má byî tô é htêwang eq htêhtoq lé pông mù,
 yhûmsûng ká nau é dangcham pé lé kê wú aq.

t	ui	z	l	-q	o
b	à	u	r	w	m

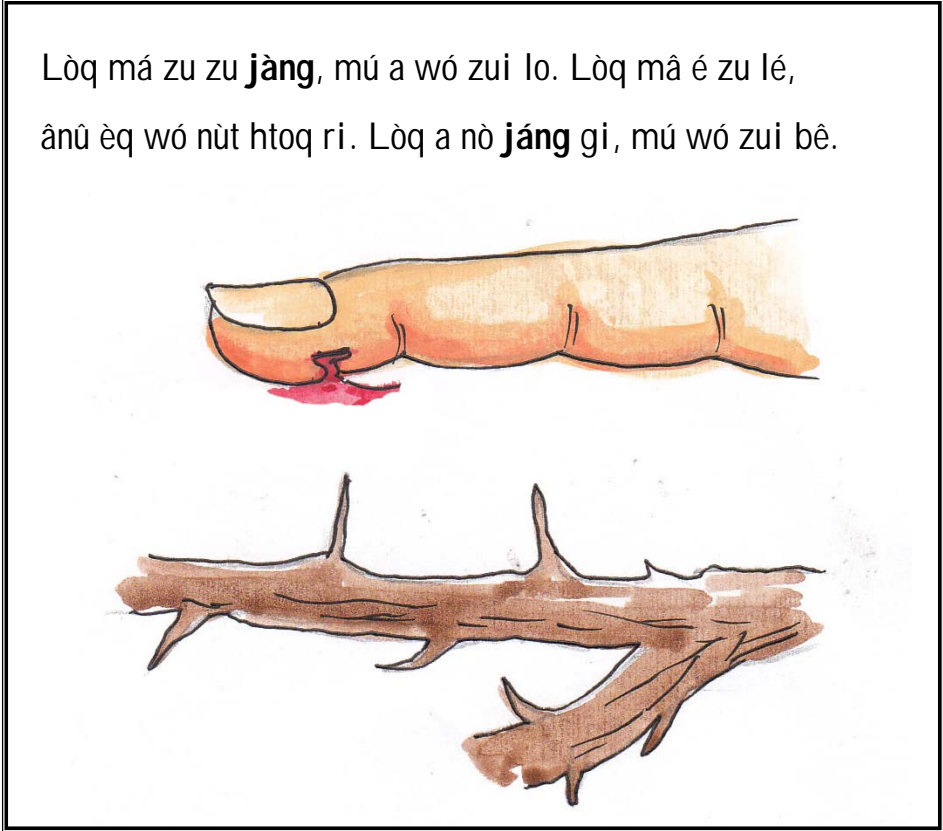
1. 2. 3. 4.

Alhô lé wú mù, haî nghut é lé kê wú aq.



Jáng

Lòq má zu zu **jàng**, mú a wó zui lo. Lòq mâ é zu lé,
ânû èq wó nùt htoq ri. Lòq a nò **jáng** gi, mú wó zui bê.

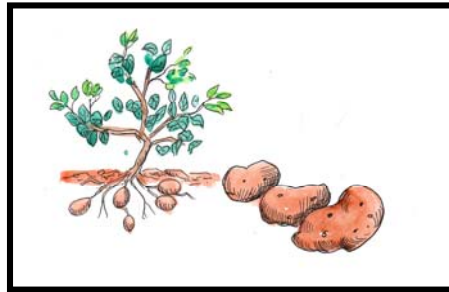


Mhoqbun 13

Y y	- ng
-----	------

htêwang= Y y
ló htáng= -ng

Îgû é hkyâm má yang-yí hô tô ri. Yang-yí cham kô lò jáng, ngá-mòq hput zô lhê. Wum-o bò râ matú, yang-yí lé myo myo zo râ lhê. Nàng yang-yí yô a kâm saí luq?



Îgû é hkyâm má, **yang-yí** hô tô ri.

yang-yí

yang

ang

ng

~ 49 ~

Nàng, yang-yí **yô** a kâm saí lhí?

yô

yo

y

yô
yo
o

o
yo
yô

yang-y` [
yang
ang
a

o	u	ui
yo	yu	yui
yòq	yùq	

a	u	i
ang	ung	ing
yang	yúng	tíng

1. A-ô má byí tô é lé kâ mhoq àq.

Yy

-ng

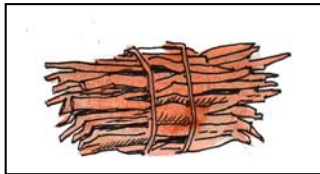
yang-yí

2. A-ô má byî tô é htêwang eq htêhtoq lé pông mù,
yHûmsîng ká nau é dangcham pé lé kâ wú aq.

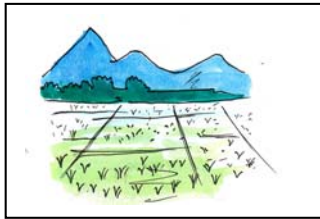
a	ui	z	y	-q	-ng	o	'
b	u	ht	g	m	n	[

1. _____ 2. _____ 3. _____ 4. _____

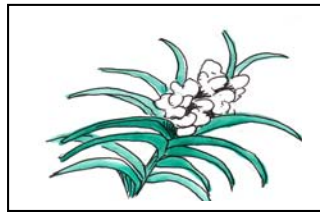
3. Alhò lé[wu[mu' dangcham kâ py`h̄g aq.



ht _____

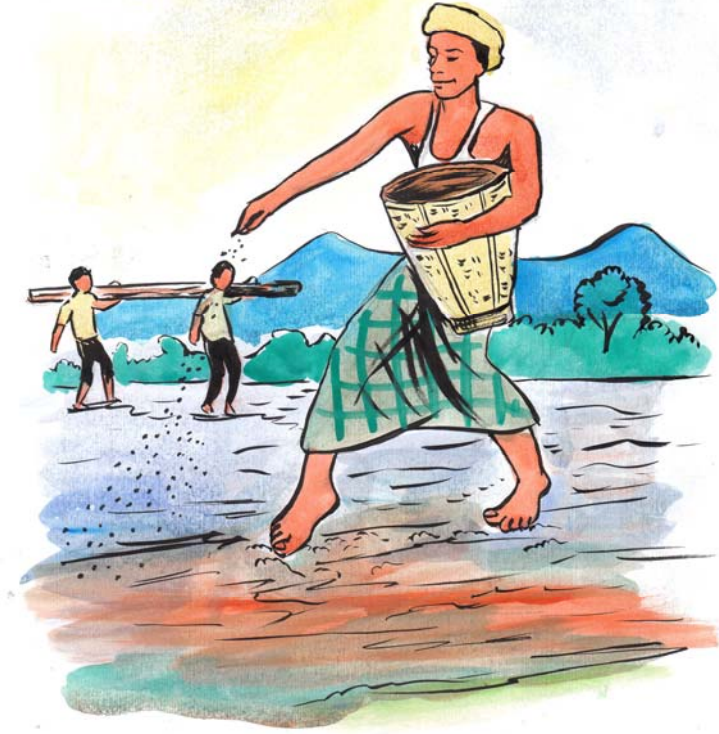


g _____



a _____

Amâng é gùq yò má, yang-yí le hô tô ri. Yò má mú bo zui râ
matú, gu-mang í yùq lé lung tô ri.



Mhoqbun 14

Hk hk	D d
-------	-----

htêwang= Hk hk

D d

La Nóng gi, hkúng htoq má dòq zung to bê nghut ri. Yhâng é luzúm wuī gi, hkúng shut dòq bang dòq, mhang yhun byi bang gi yhun byi, mhang wàq dé bang gi wàq dé kut akô. Haū mù, yhùm wó chôm maū pyám bekô nghut ri.



hkûng htoq má **dòq** zung to bê nghut ri.

hkûng **dòq**

hku **d**

hk

hkung
hku
u

u	e	o
hku	hke	hko
hkûng	hkeq	hkoq

Dòq
do
o

o
do
dòq

o	u	ui
do	du	duî
dòq	dùq	

1. A-ô má byî tô é lé kê mhoq àq.

Hk hk

D d

hkung

kehtoq dòq

2. A-ô má kê tô é, pung é laiká cham lé, myihkyèt èq tûnshit mù, dum kê mhoq àq.

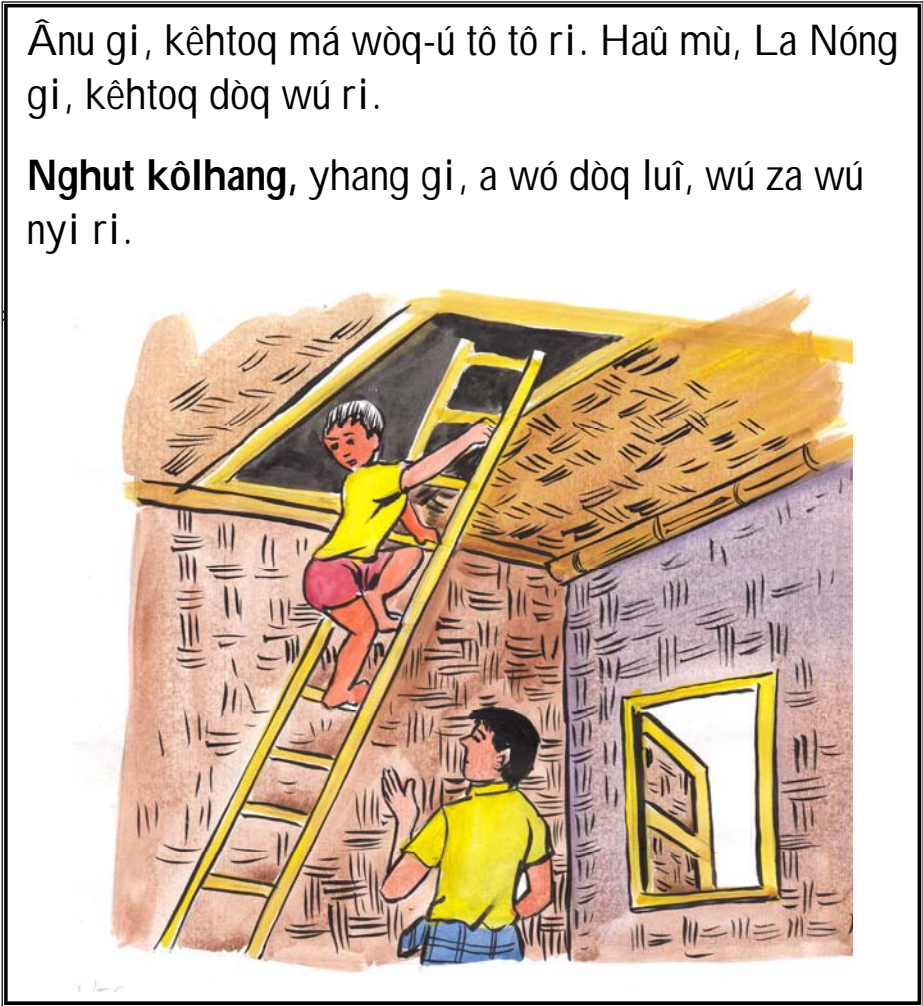
Dòq	d
Do	do
D	dòq

Hkûng	Hk
Hk	ung
ung	Hkûng

Nghut kôhang

Ânu gi, kêhtoq má wòq-ú tô tô ri. Haû mù, La Nóng gi, kêhtoq dòq wú ri.

Nghut kôhang, yhang gi, a wó dòq luî, wú za wú nyi ri.



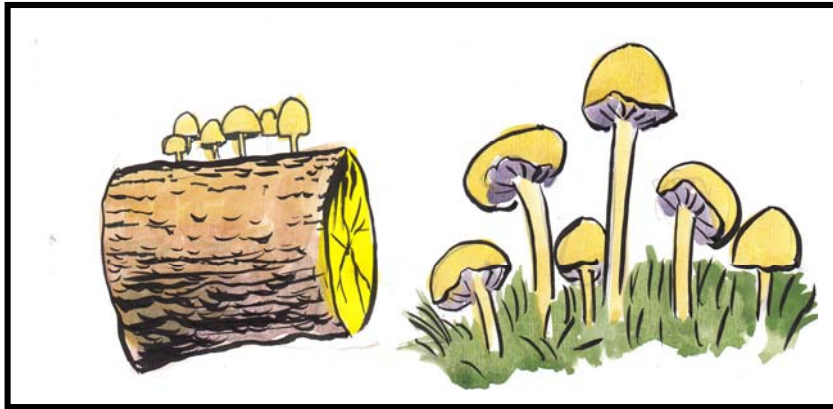
Mhoqbun 15

au	-m
-----------	-----------

htêhtoq tsúm= au

ló htáng= -m

Maù gi, xun kut jung le jòq lhê. Chi wó saî é jung le jòq lhe>
Maù lé, hkyâm pé má wó ho zô lhê. Yòso hkaû mâ é sikdum eq
bùm yàm pá pé má le, maù yùq lhe>



Maù gi, xun kut jung le jòq lhê.

Maù

Mau

au

bùm yàm pá pé má le, yùq lhê.

bùm

bum

um

-m

Maù
Mau
au

au	au	au	au
mau	hkau	htau	zau
maù			zaú

bùm
bum
um
u

a	u	u
am	um	um
wam	wum	sum

1. Dang-yán le[nghap mu', dangcham hkyin kat àq.

1. Ânù gi, hkui lé _____ èq tuî tô ri.

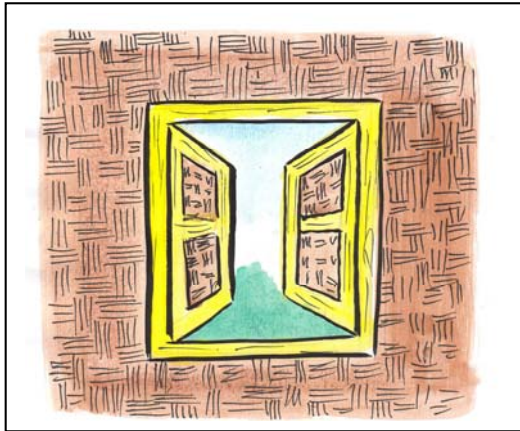
(tuî, mau)

2. La Gam hkúng htoq mai leng mù, _____ má
no tô ri. (bùm, lîngzing)

3. Ma Yung gi, wuìlàng shut, _____ hkâm e ló bê.

(wuì, yò)

2. A-ô mã é alhô haî nghut ri [l]hú? Myihkyèt má kê wú aq.



3. A-ô mã byî tô é lé kê mhoq àq.

au

-m

mau

yam

4. A-om[by` to`[htewang eq hte[toq le[pong mu'
 yhûms`ng ka[nau e[dangcham pe[le[ka>wu[aq.

y	a	au	-m	-q	-ng
b	a'	u	o	g	m

1. _____ 2. _____ 3. _____ 4. _____

pe[



Mhoqbun 11 mai 15

Tau mhoqbun 3

Ban mhoq lai be pe[

htewang	T t W w R r Y y Hk hk D d
htetsoq tsufn	ui au
lo[hta[ng	-ng -m

La No[ng gi, bum yah ma[htang gam e[htuq ra[ga, lazufn rayuq
eq e lo[ri. Bum yah ma[yo[za[ng ralhum ma[zang lo[zo ra[so[
ako> Hau[hku[ra, lo-mo[radu htoq lo e[lé myàng mù, yo'zàng htoq
ma[lo[dòq zung to>ako>



1. hk gaɣ[htewang le[nghap cham 1,2,3 ma[bo e[pe[èq
 joɣ[dong dangcham wo[kaɣ[myho[ka[mu'
 nghap cham 3 ma[bo e[hteɣ[joɣ[dong kat wu[aq.

Dangkeɣ

hkang, hkau

	1	2	3	
	a	-ng		_____
hk	au		-q	_____
o	-m	>		_____
ui		[_____
u		'		_____

2. By` ɣoɣ[dangcham pe[le[a-oɣma[roq kaɣwu[aq.

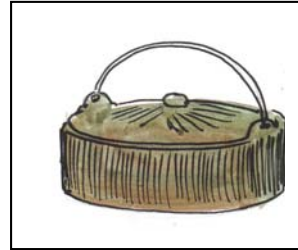
hkung dong tui rung
 () () () ()

3. Alhoʻtə[wu[mu, by` ʔoʻtə[laika[yhângnuʔtə
 my`hg kaʒu[ʔq.

w	o	m	au	'	ui	>
-q	y	a	i	-ng	hk	n

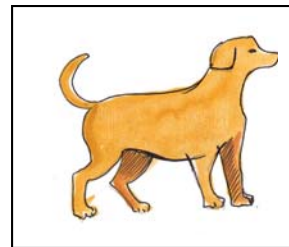






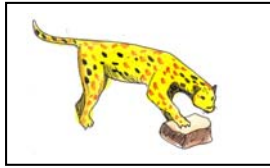






4. By` ʔə[dangcham pe]le[alhoʔe[wu[mu', myihkyèt ma]o
shoq hkyin kat àq.

bum yang-y wui mau' wuhg



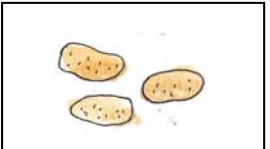
(a) _____eq wòq, mùng eq mòq.



(b) Āwa _____ dòq lo[r]i.



(c) Yambu[mai _____hkam e ako>



(d) _____ zoʔe wufn bo lhe>



(e) _____ lé gi, wo[zô lhe>

Mhoqbun 16

H h	My my
-----	-------

htewang= H h

My my

Garai gi, h`[hpyang mai, waxang zo wu`>le[myi le by`>
to be>Myi gi, a wo[a ge e[jung nghut lhe>Nghut kôlhang, myi
le[rago a dât chung kat ja[ig, yhu[n nye[wa' nye[dût lo' mu,
wu`>ke jamjau hui se>he>Hau>mu', ngá-nhu[ig gi, myi le[rago
za dât chung ra>dût lhe>



h` [hpyang mai, waxang zo wu`]e[myi le by` >to be>

h` [

myi

hi

my

h

h` [i	a	u	e	ui
hi	hi	ha	hu	he	hui
i	hí	haq	huq	hen	

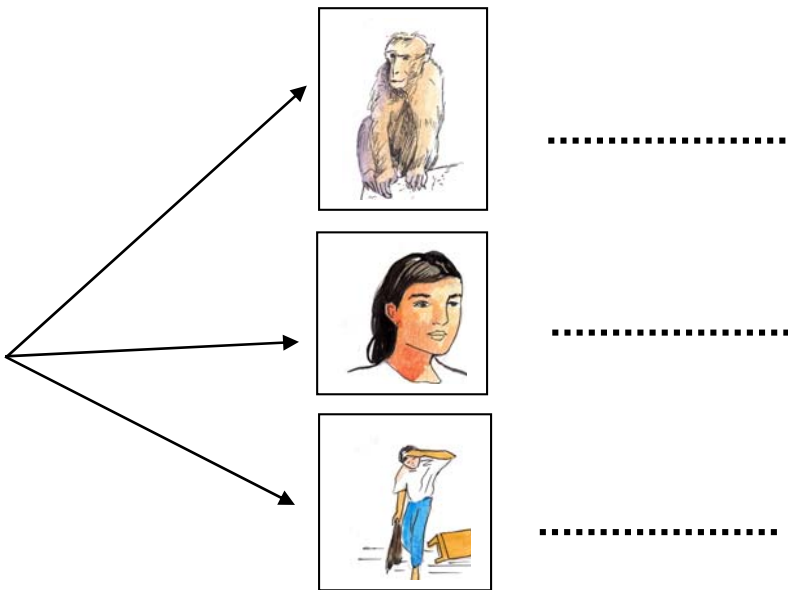
myi	a	i	o	ui
i	mya	myi	myo	myui
	myaq		myoq	

1. A-omabɔy` ʔoɕle[kaɲhoq aq.

H h
My my
myi
hui

2. A-omabɔy` ʔoɕ[htewang le[alhô le[wu[mu' dangcham sa` >
ka[aq.

My



.....
.....
.....

3. Hteᵛkat mhoq àq. Hteᵛkyo gi, hai kuᵛnlhaᵛle a kat raᵛ[
nghut lhe>

	['	>
he				
myi				

be>

LaHkâ gi, ne leᵛmyamzui maᵛ[myam to beᵛnghut
ri. Hauᵛgi, ne ging raᵛmatuᵛnghut lhe>



The illustration shows two items: a traditional wooden structure made of vertical posts and a pile of sticks, and a campfire with several logs and a bright flame.

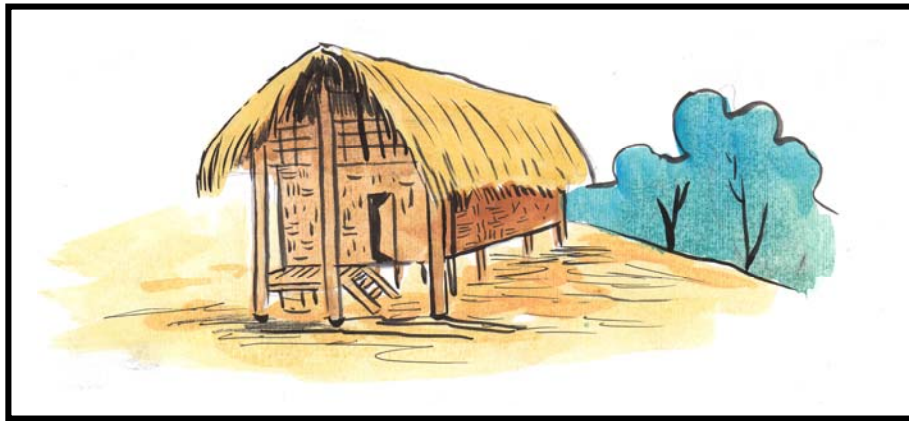
Mhoqbun 17

ai	-n
-----------	-----------

hteḷtoq tsuḷn= ai

loḷhtaḷḡ= -n

La`'moḷlo'jaḷḡ, yhuḷn nuḷ seḷhe>Hauḷmu', yhuḷn z`hg peḷleḷ nḷk
nḷk duḷxuq raḷdùt lḷhe>Hauḷḷkuḷ shèq, mauwoḷa`'lo'koḷhang, a
gyùq ra lo nghut ri.



La`'moḷlo'jaḷḡ, yhuḷn **nuḷ** seḷhe>

La`' **nuḷ**

Lai **nun**

ai **un**

-n

ai
lai
la`'

la`'
lai
ai

ai	ai	ai
lai	wai	hkai

u
nu
nun
nún

nuḥ
nun
un
n

u	a	o
du	ha	yo
dun	haḥ	yoḥ

1. A-omə[by` ʔə́ le[kəḥhoq àq.

ai

-n

laìdun

nuḥ lu` >

2. By` ʔoæ[dangcham pe[le[a-o>ma[hkyèt toæ[jowo'ma[jo shoq kat àq.

Zaiwâ lum wuh `wa

_____ zo-myi wu` gi, yuŋg ako> Muzo[zui>e[ma[le, wo[_____lhe> I kun le, rago za ge _____ge wàq e[bang nghut ako>Înu _____le[hkunggaæ[zo-myi wu`le nghut ako>

3. Hpoŋg, myhi kuŋlha[hkau>maæ[jô é dangcham le[hkyin yu'mu', myihkyèt toæ[jowo'ma[kak kat àq.

1. Nungmang hka[lo[beʔ
_____wuʔ lo[be> (zai, lai)
2. Gùq hau>hai gùq?
_____gùq. (go[Zumgo]
3. Myi hau>hai myi?
Lùq _____ myi. (wuh, htun)
4. Nu`'hau>hai nu`?
_____ tui nu`. (hkui, lo)

4. AlhoꞤ[wu[mu' ha` kut nyi koꞤ]e[kawu[aq.

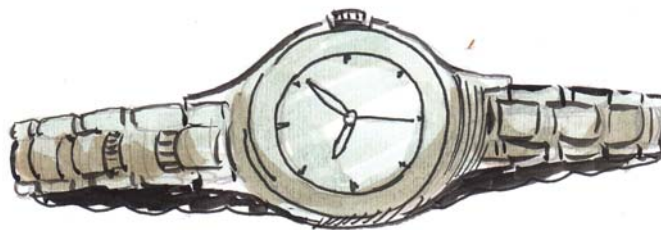


.....
.....
.....
.....

HauꞤmu'lu` >

Razah eq razah gi, la` ʔo[beꞤghut ri. Mingkan zowu` ʔe, myo>
htam lo'beꞤghut ri. La` ʔo[bezah lé gi, a wo[dum tauꞤyu'lo.

HauꞤmu'lu` >wo[e[aten le[gu'to raꞤhe>



Mhoqbun 18

Sh	sh
----	----

htewang= Sh sh

Zaizô pe[gi, sham le[rage za su` htoq yu' mu', shambyang ma[
xang wuh se>ako> Sham gi, ra>e[ma[wo[za> e[htoq ago[
yhûmsing guhg le[le, wo[makòp lhe>



Zaizo xep[gi, **sham** le[rago za su` xtoq yu' mu'

sham

sham

sha

sh

sham	a	u	ui	ai	o	i
sham	sha	shu	shui	sha`[sho	shi
sha	sham	shuq			shoq	shin
sh						

1. A-ô ma[by` xox[le[ka`mhoq àq.

sh sh

sham

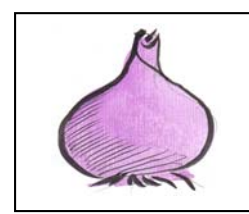
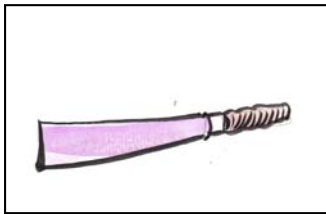
sha`[

2. By` ʔə[htewang eq hte[htoq pe[le[pong mu' ma[to`ə[ḡòk
ma[kâ kat àq.

	ui	u	o	a`[
sh				
h		hu		
my				
ht				hta`[

3. A-o[ma[by` ʔə[le[alho[my` hg pong kâ htoq àq.

sh	a>	-m	h	i	-n	u	
----	----	----	---	---	----	---	--



.....

.....

.....

Zo shang wu`'gi, shang du[du[nau ako>

Shang du[du[le, wo[du[hkoq e[yuq gi, unq be>
 nghut ri. Shang du[du[koɬ[u le[ha` ɬe hka[u a
 bun zo ko[nghut ri.



Mhoqbun 19

S s	Hp hp
-----	-------

htewang= S s

Hp hp

Laika[gi, wu`'-sanghpo eq pung lhe>Wu`'mo[lang wo[gu>byit ra>
matu[gi, wu`'-sanghpo jòq ra>[su, byu'ra-myukò>myhang lo'ra>
matu[gi, Laika[h` [wo[ra>the>



Laika[gi, wu`'-sanghpo eq pung lhe>

sanghpo

sang

sa

s

wu`-sanghpo jòq raæ[su

sanghpo

hpo

hp

sanghpo
hpo
o

o	au	u
hpo	hpau	hpu
hpoq		hpuq

sanghpo
sang
sa
a

a	i	ui	o
ang	ing	sui	ong
sang	sing	sui	

1. A-oxma[by` tox le[ka`mhoq àq.

S s

Hp hp

sanghpo

2. A-o>ma[hkyèt shit to>[dangcham eq pung e[dangcham le[
ka>hing shit àq.



sanghpo

gu-mang hpo[

yam bu[

sang

sanghpo

mèbu

sâng-hi

luzu[m hpo[

gabu[

3. A-o>ma[by`>to>e[dangtu[m pé le[danghkun dùt shoq
myihkyèt èq hkyèt shit àq

1. Hku[ndong má

nu`e>ho lo'àq.

2. Sham le[htoq shoq

yo'lo[sà` [zo ra>

3. Hkui zo tui ra>matu[

hkâzu>g.

4. Bum-u ma[

su`>o aq.

Nang Nù gi, ga`mai, yùqzo La Gaḥ e[matu[
 la`-myi-uḥ rahpu wui lo ri. La Gaḥ gi, lùm gabu[
 mu', myi-uḥ wàq lu`>yošo hkau>ma[goḥg e lo[be>
 nghut ri. Myinhṭaḅg dum tau>lo le, hpuíwòq `[du
 wo[yu lo ri.



Mhoqbun 20

Gy	gy
----	----

htewang= Gy gy

Bum ma[gyo gyo[toæ[hkuæ, mhuthtui su düt lu`>gyaí hpyu zan yufg toæi. Gyobum ma[nyí e[dusàk pe[gi, sho-mau[gya`[htu ako>Hau>gyobum ma[nyí e[byu' pe[gi, dusàk hau[pe[le[hkat gyafn bìk zo mu, asàk bau[ako>



Gyobum ma[nyi e[dusàk pe[gi,

Gyobum

Gyo

Gy

Gyobum	o	u	ui	a	e'
Gyo	gyo	gyu	gyui	gya	gye'
o	gyòq	gyùq		gyang	

1. A-ô ma[by` tɔɛ[le[kamhoq àq.

Gy gy

gyàmdong

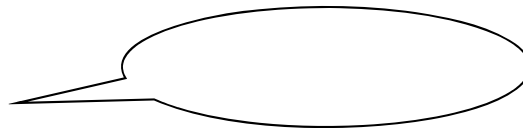
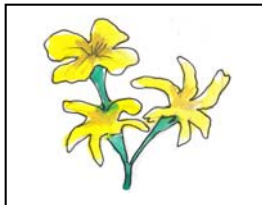
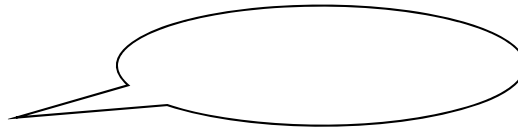
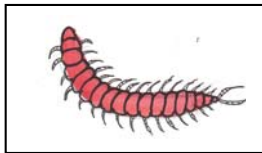
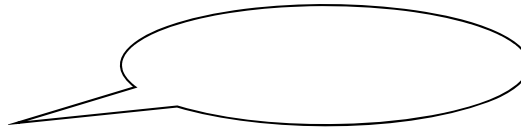
gyobum

2. A-om[by` zo`[dang-yaf] le[danghkun hkyang shoq sa` ka[aq.

1. zo`e wum Yang-y` [bo lhe>

2. La` dun mau e[htang wo lo lhe>

3. Alho`e[wu[mu', dangcham ka[aq.



Zaizô pê ê, tínggo[se>go[ako>hu? Zaizô pe[gi, Zaiwa>tínggo[se>
go[ra>he>Zaiwâ tínggo[go[mu', Zaiwa>túnghking tu toq shafig,
le[keq o>Le[keq o>



Mhoqbun 16 mai 20
 Tauꨀmhoqbun 4
 Ban mhoq lai beꨀpe[

htewang	H h My my Sh sh S s Hp hp Gy gy
hteꨀtoq tsuꨀn	ai
loꨀhtaꨀng	-n

H`[lheꨀe[bum mau maꨀe[Zaizô pe[gi, wu`hkuꨀng ma[
 wushang eꨀ wu`eꨀkamu' mu', htuꨀngka[mai wun akoꨀHa`ꨀmu'
 gaꨀe, wushang gi, wun le lu`', wàq le le lu`', wun dòq le le lui e[
 yaꨀmai, o[le wushang eꨀ za eꨀkamu' nau akoꨀnghut ri. Wushang
 le[gi, koꨀ[waho gàm awang le[sai yu akoꨀnghut ri.



1. H` yán ma[by` ʔoʔ[dangcham e[le[dang-yaf[
hkaʔma[həʔmu'kaʔh` əg shit àq.

Dangkeʔ

hka[Nahg hka[lo[raʔ
h` əg	Ma Yung h` əg wuizo wo[ri.
soi	Alho>soi wu[əq.
hpo	Sanghpo-shi hkoq àq.
gyam	Zo gyo[htəg má, gyam>dong hpo>

2. By` ʔoʔ[dangcham pe[le[danghkun dùt shoq ka>wu[əq.

Dangkeʔ

(h` əg) Mu Lat gi, h` əg wuizo wo[ri.

(shin) _____.

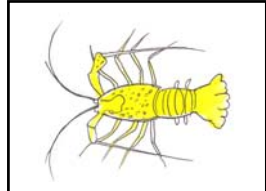
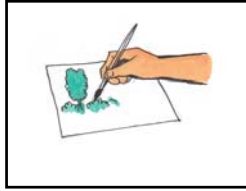
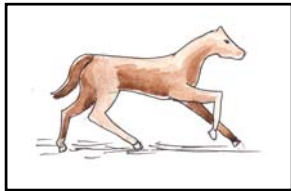
(gyùq) _____.

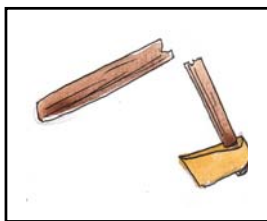
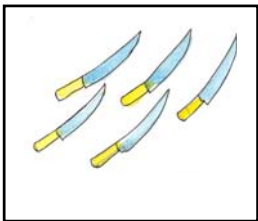
(hpuíwòq) _____.

(wushang) _____.

3. *Alho* [wulmu, by' to] [htewang laika] [yhangnu] [q
 my`hg kâ wu] [aq.

my	u	a	ai	-ng	b	gy	o	oi
au	l	z	-n	sh	-m	ui	s	> '





ZAIWÂ LAIKÁ HTÊWANG

Zaiwâ laika[htêwang ko

L	O	N	G	U	Z	
A	E	M	B	Ng	K	Ht
T	W	R	Y	Sh	Hk	D
H	My	I	S	Hp	Gy	J
Lh	Hpy	Nh	Ny	P	Ngh	Hky
X	Chy	By	Yh	Myh	Rh	Ch
Ky	Ts	Nyh	Wh	F	Mh	Py

Zaiwâ laiká htêwang tiq

l	o	n	g	u	z	
a	e	m	b	ng	k	ht
t	w	r	y	sh	hk	d
h	my	i	s	hp	gy	j
lh	hpy	nh	ny	p	ngh	hky
x	chy	by	yh	myh	rh	ch
ky	ts	nyh	wh	f	mh	py